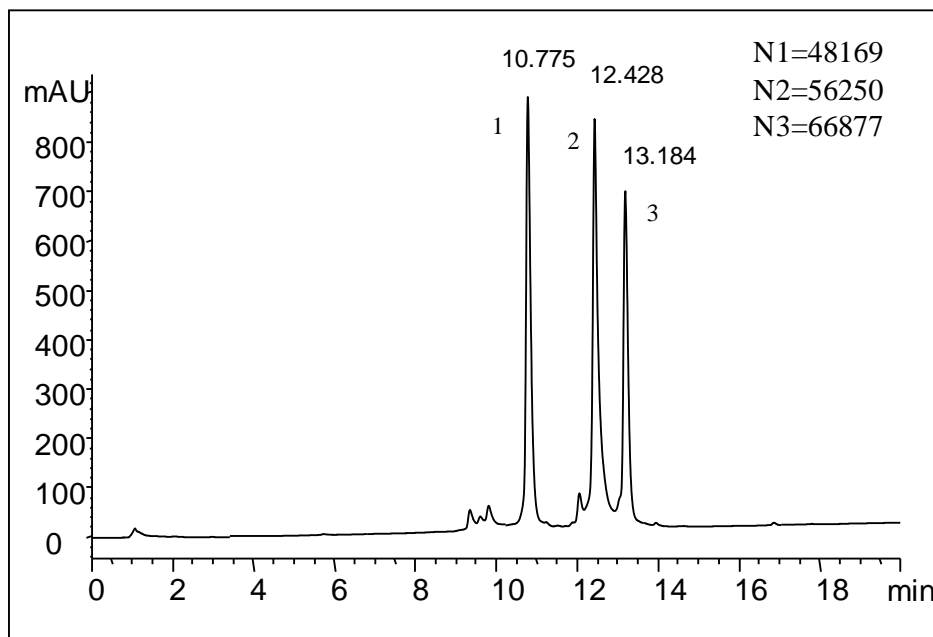


**Separation of Proteins on Antibodix™ NP1.7 (1.7  $\mu$ m, 4.6x50 mm)**

Column: Antibodix™ NP1.7 (1.7  $\mu$ m, 4.6x50 mm)  
Mobile Phases: A, 10 mM phosphate buffer, pH 6.0; B, A + 1.0 M NaCl  
Gradient: 10-100% B (25 min)  
Flow Rate: 0.3 mL/min  
Temperature: Ambient  
Detection: UV 214 nm  
Concentration: 1 mg/mL for each  
Injection Volume: 5  $\mu$ L  
Samples: 1. Cytochrome C, 2. Lysozyme, 3. Ribonuclease A

Keywords: Weak cation exchange, Antibodix, protein, high resolution