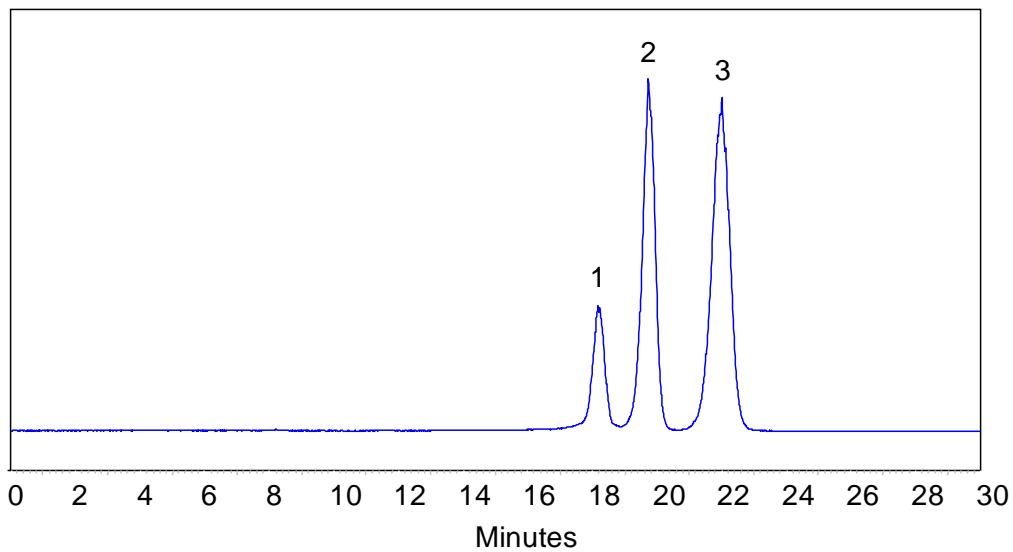




**Analysis of Xylose, Galactose and Mannose on
Carbomix[®]-Pb (10 μ m, 5%, 7.8x300 mm)**



Column: Carbomix[®] Pb-NP10 (10 μ m, 5% crosslinkage, 7.8x300 mm)
Mobile Phase: water
Temperature: 75 °C
Flow Rate: 0.5 mL/min
Detection: ELSD
Sample Injection: 2 μ L
Samples: 1. Xylose, 2. Galactose, 3. Mannose

Keywords: Carbohydrate, Carbomix, lead form, xylose, galactose, mannose