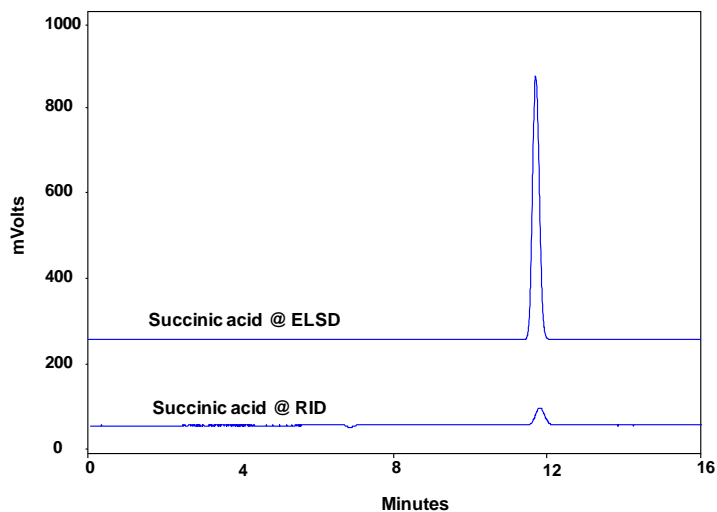
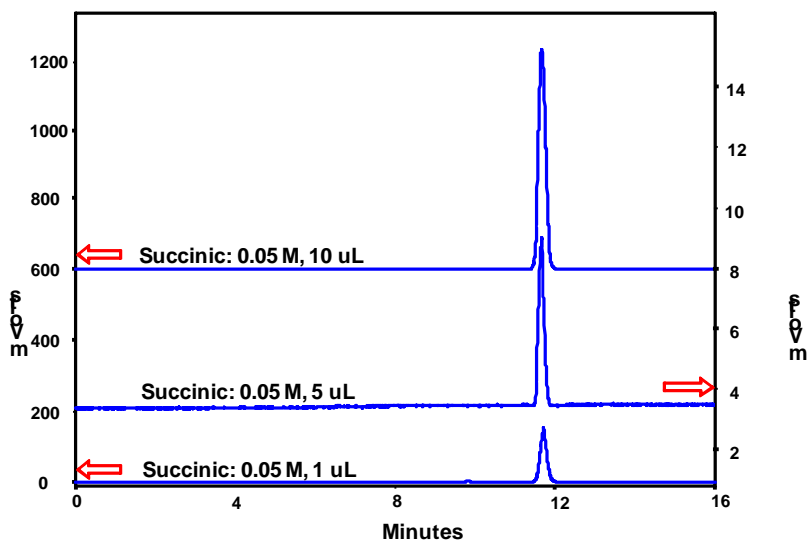




**Analysis of Succinic Acid on Carbomix[®] H-NP10 (10 μ m, 8%, 7.8x300 mm)
- Comparison of the two detectors: ELSD and RID**



Column:	Carbomix [®] H-NP10 (10 μ m, 8% crosslinking, 7.8*300 mm)	
	1. ELSD	2. RID
Mobile Phase:	TFA solution, pH 2.5	2.5 mM H ₂ SO ₄
Flow Rate:	0.6 mL/min	0.6 mL/min
Temperature:	55 °C	55 °C
Detection:	ELSD (drift tube temp.: 65 °C; gas flow rate: 2.0 L/min	RI (temp.: 30 °C
Injection Volume:	10 μ L	10 μ L
Sample:	succinic acid, 0.05 M	succinic acid, 0.05 M



Column: Carbomix[®] H-NP10 (10 μ m, 8% crosslinking, 7.8*300 mm)
Mobile Phase: TFA solution, pH 2.5
Flow Rate: 0.6 mL/min
Temperature: 55 $^{\circ}$ C
Detection: ELSD (drift tube temp.: 65 $^{\circ}$ C; gas flow rate: 2.0 L/min)
Injection Volumes: 10 μ L, 5 μ L, 1 μ L

Keywords: Carbohydrate, Carbomix, hydrogen form, succinic acid, ELSD, RI