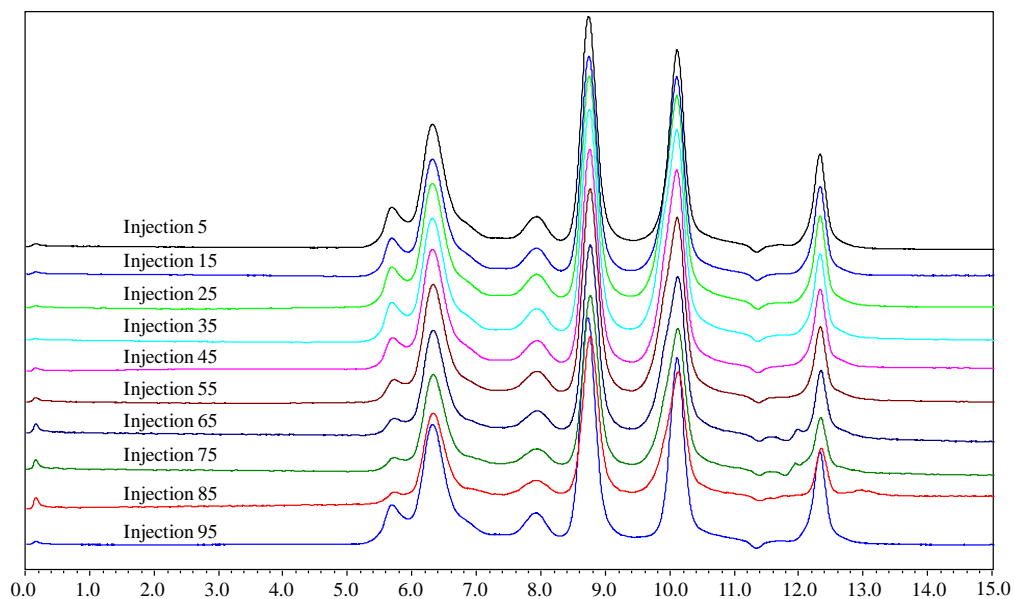




Analysis of Protein on SRT[®]-C - Column Stability Test



Column:	SRT [®] -C 300 (5 μ m, 300 \AA , 7.8x300 mm)
Mobile Phase:	150mM phosphate buffer, pH 7.0
Temperature:	Ambient
Flow Rate:	1.0 mL/min
Detection:	UV 214 nm
Injection Volume:	2 μ L
Samples:	1) thyroglobulin (0.5 mg/mL), 2) BSA(0.5 mg/mL), 3) RNase A(0.5 mg/mL), 4) uracil (0.1 mg/mL)

Keywords: Size exclusion, SRT-C, protein, stability