



PEG Analysis on SRT[®]-150 and SRT[®]-300

Column: SRT[®] 150 (5 μ m, 150 Å , 7.8 x 300 mm)

Mobile Phase: 150 mM phosphate Buffer, pH 7.0

Flow rate: 1.0 mL/min

Detection: RI (30 $^{\circ}$ C)

Column temperature: 25 $^{\circ}$ C

Pressures: 720 psi

Injection volume: 20 μ L

Sample: 1.5 mg/mL in mobile phase

PEG 1, MW 636, 6,550, 118,000, 932,000

PEG 2, MW 2010, 42,700, 496,000

PEG 3, MW 232, 17,900, 271,000

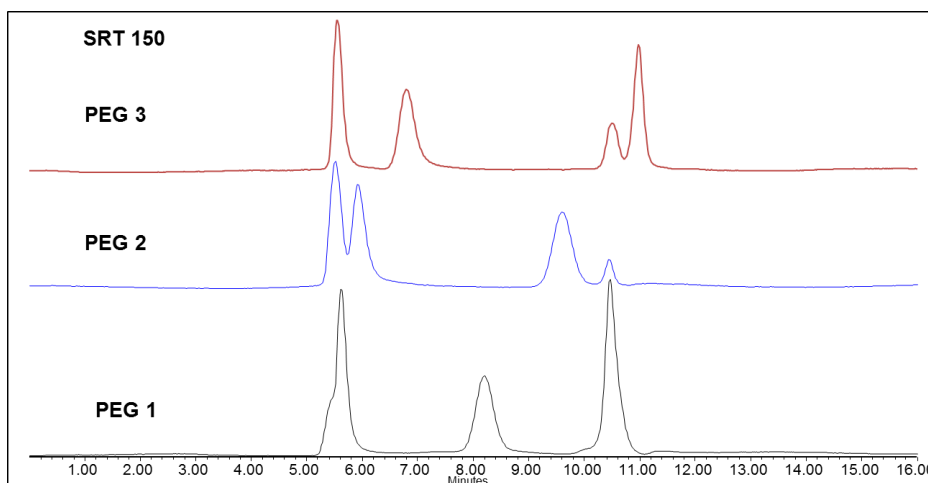


Figure 1. Chromatograms for PEG 1, 2, 3 samples on SRT[®] 150 7.8 x 300mm.

NO	Molecular weight	Log MW	Elution volume (mL)
1	932000	5.969416	-
2	496000	5.695482	5.517
3	271000	5.432969	5.559
4	118000	5.071882	5.622
5	42700	4.630428	5.923
6	17900	4.252853	6.803
7	6550	3.816241	8.201
8	2010	3.303196	9.603
9	628	2.79796	10.465
10	232	2.365488	10.983

Table 1. PEG molecular weight and retention time on SRT[®] 150, 5 μ m, 7.8 x 300 mm.



Column: SRT[®] 300 (5 μ m, 150 Å , 7.8 x 300 mm) Sample: 1.5 mg/mL in mobile phase
Mobile Phase: 150 mM phosphate Buffer, pH 7.0 PEG 1, MW 636, 6,550, 118,000, 932,000
Flow rate: 1.0 mL/min PEG 2, MW 2010, 42,700, 496,000
Detection: RI (30 $^{\circ}$ C) PEG 3, MW 232, 17,900, 271,000
Column temperature: 25 $^{\circ}$ C
Injection volume: 20 μ L
Pressures: 720 psi

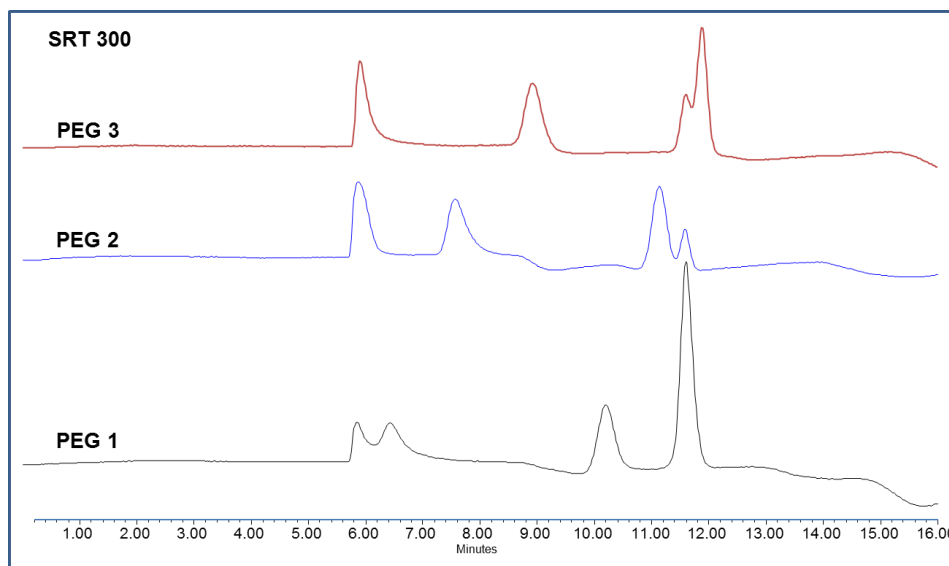


Figure 2. . Chromatograms for PEG 1, 2, 3 samples on SRT[®] 300 7.8 x 300mm.

NO	Molecular weight	Log MW	Elution volume (mL)
1	932000	5.969416	5.853
2	496000	5.695482	5.875
3	271000	5.432969	5.91
4	118000	5.071882	6.426
5	42700	4.630428	7.568
6	17900	4.252853	8.927
7	6550	3.816241	10.201
8	2010	3.303196	11.137
9	628	2.79796	11.604
10	232	2.365488	11.89

Table 2. PEG molecular weight and retention time on SRT[®] 300, 5 μ m, 7.8 x 300 mm.

Keywords : size exclusion, SRT, PEG, SRT 150, SRT 300