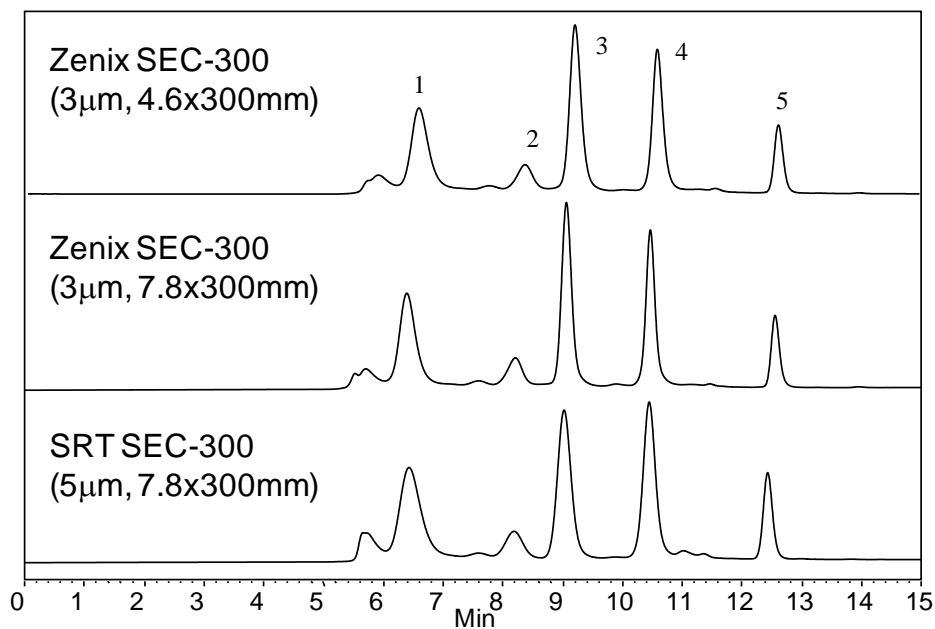




SEC Efficiency Comparison – Zenix™ (3 μ m) vs SRT® (5 μ m)



Columns: Zenix™ 300 (3 μ m, 300 Å) and SRT® 300 (5 μ m, 300 Å)
Mobile Phase: 150 mM Phosphate Buffer, pH 7
Flow Rates: 1.0 mL/min for 7.8x300 mm; 0.35 mL/min for 4.6x300 mm
Temperature: Ambient (~23° C)
Detection: UV 214nm
Injection Volume: 10 μ L (3 μ L for 4.6x300 mm)
Samples: 1) Thyroglobulin (1.0 mg/mL), 670 kD; 2) BSA dimer, 132 kD; 3) BSA (1.0 mg/mL), 66 kD; 4) Ribonuclease A (1.0 mg/mL), 13.7 kD, and 5) Uracil (2.5 μ g/mL), 120D.

Keywords: Size exclusion, Zenix, SRT, protein, particle size, comparison, column screening